

CERTIFIED LAND CORNER RECORDATION

DESCRIPTION OF CORNER EVIDENCE FOUND, AND ORIGINAL RECORD (if known)

16x12x5 granite boulder at foot of bluff.

DESCRIPTION OF MONUMENT AND ACCESSORIES ESTABLISHED TO PERPETUATE THE ORIGINAL LOCATION OF THIS CORNER:

Searched diligently over about 3-acre area but no stone found. Set 1 1/2" aluminum cap as shown in photo below.

SKETCH, WITH COURSE AND DISTANCE TO ADJACENT CORNER IF DETERMINED IN THIS SURVEY. (May Sketch or Paste Reproduction on Reverse Side.)

See diagram on other side.



I, Larry T. Perry L.S. certify that I have carefully performed or reviewed the work done on the diagrammed corner as reported on this recordation form and approve the same.

Larry T. Perry L.S. 3047  
Signature of Surveyor Registration No.

STATE OF WYOMING,  
Office of Clerk and Recorder,  
County of Taramie

797637

This "corner record" was filed for record on the JUL 9 1985 day of 19, was noted on the cross-index plat and is assigned page No. \_\_\_\_\_, in book No. \_\_\_\_\_.

Janet C. Whitehead  
County Official

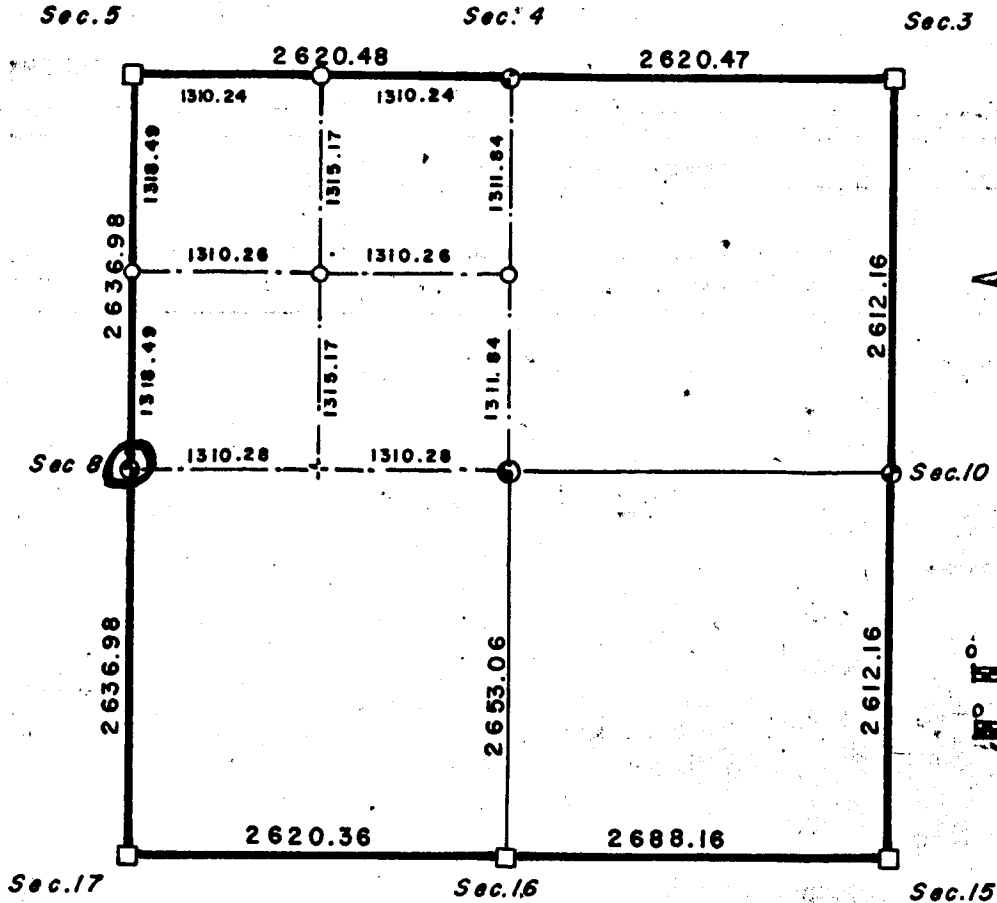
Cross Index No. \_\_\_\_\_ T. \_\_\_\_\_ R. \_\_\_\_\_ Mer. \_\_\_\_\_  
\_\_\_\_\_ T. \_\_\_\_\_ R. \_\_\_\_\_ Mer. \_\_\_\_\_  
\_\_\_\_\_ T. \_\_\_\_\_ R. \_\_\_\_\_ Mer. \_\_\_\_\_  
\_\_\_\_\_ T. \_\_\_\_\_ R. \_\_\_\_\_ Mer. \_\_\_\_\_  
\_\_\_\_\_ T. \_\_\_\_\_ R. \_\_\_\_\_ Mer. \_\_\_\_\_  
\_\_\_\_\_ T. \_\_\_\_\_ R. \_\_\_\_\_ Mer. \_\_\_\_\_

G-9 13-69

# Section 9

## T. 13 N., R. 69 W., 6th 1/4

### LARAMIE COUNTY, WYOMING



#### LEGEND

- Stone found
- ⊙ Aluminum cap set, No stone found, 1/4 corner
- ⊙ Center of Section, Aluminum cap set
- Aluminum cap set, 1/16 corner
- + Nail set, 1/16

State of Wyoming }  
 County of Laramie }

#### CERTIFICATE of SURVEY

I, Larry T. Perry, a licensed surveyor in the State of Wyoming do hereby certify and declare that this drawing was prepared from field notes of a survey performed by me during the month of June 1985 A.D. and that it represents the corners as found and set. The 1/4 corners set were established in accordance with the BLM manual after a diligent search for the original stone monuments as set by the G.L.O. in the year of 1870.

*Larry T. Perry L.S.*  
 Larry T. Perry, L.S.  
 Wyoming L.S. 3047